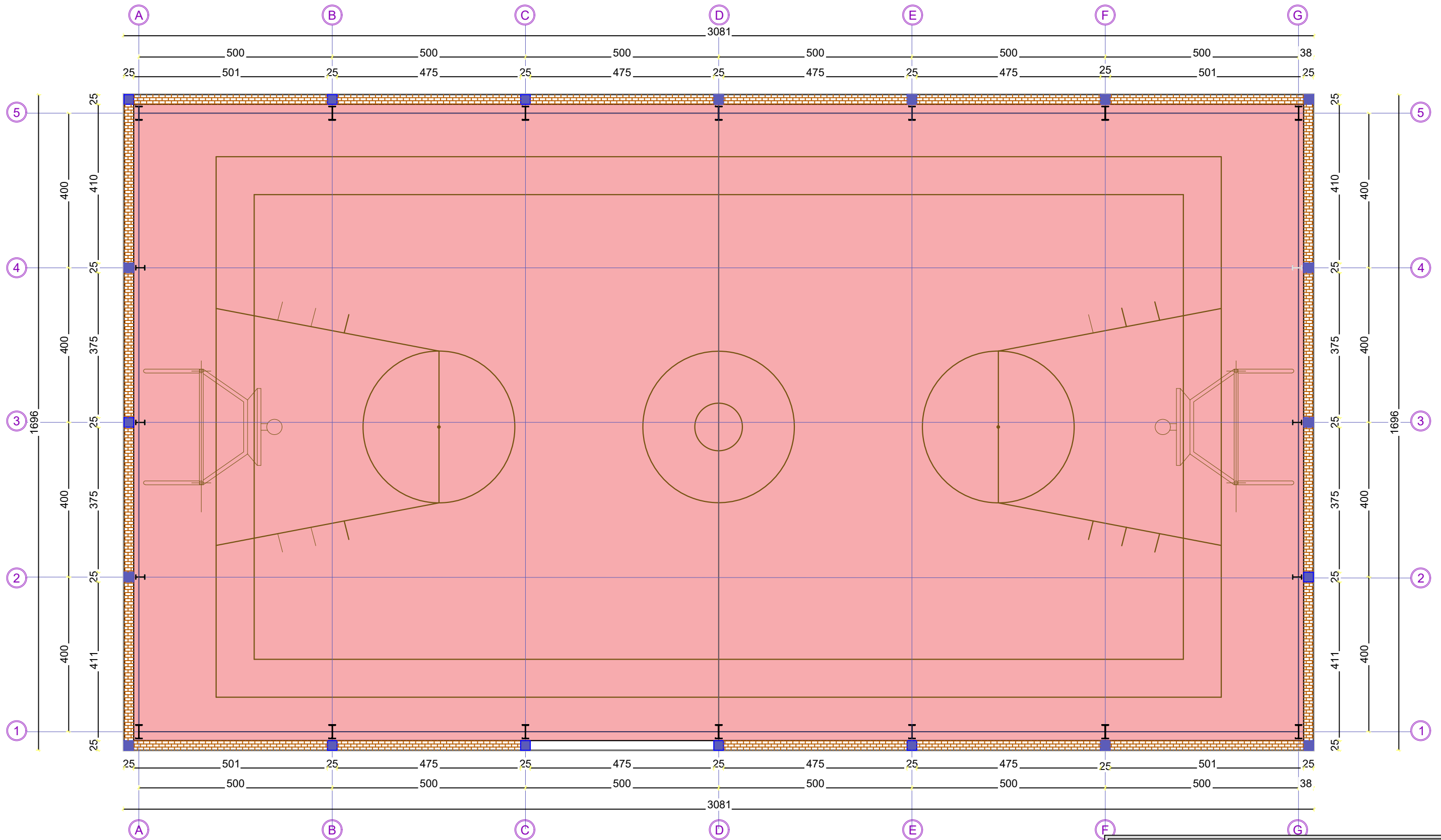
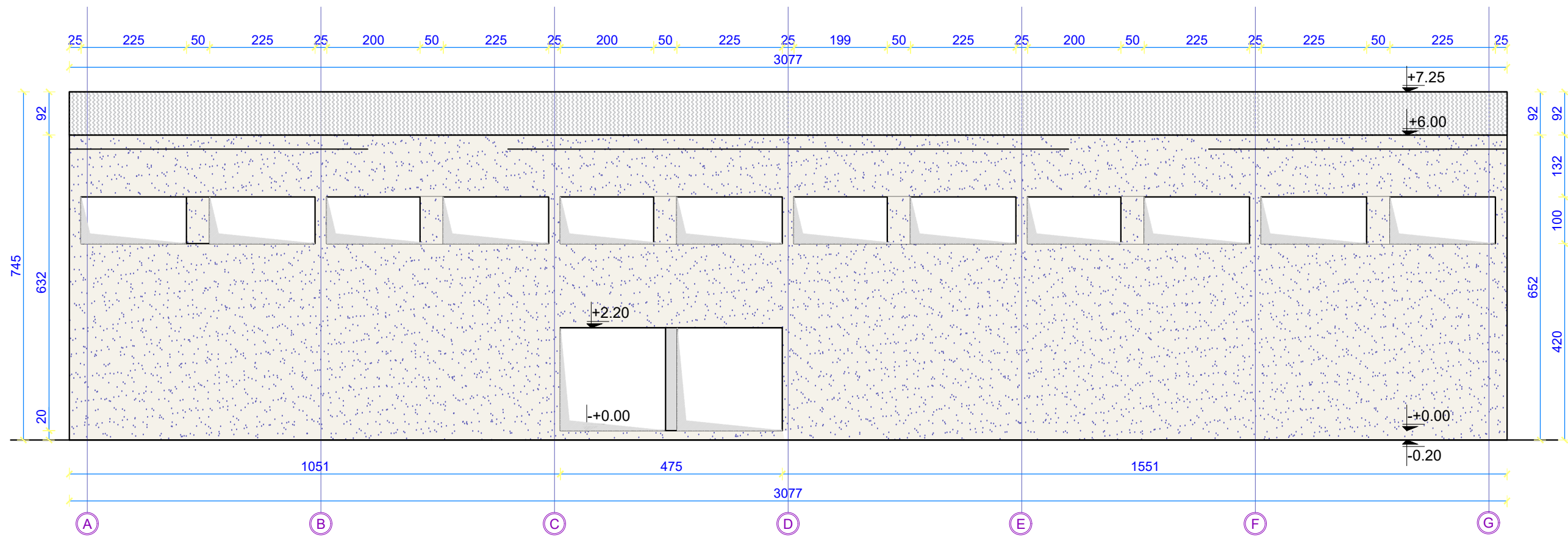


PLANIMETRIA Sh 1:100



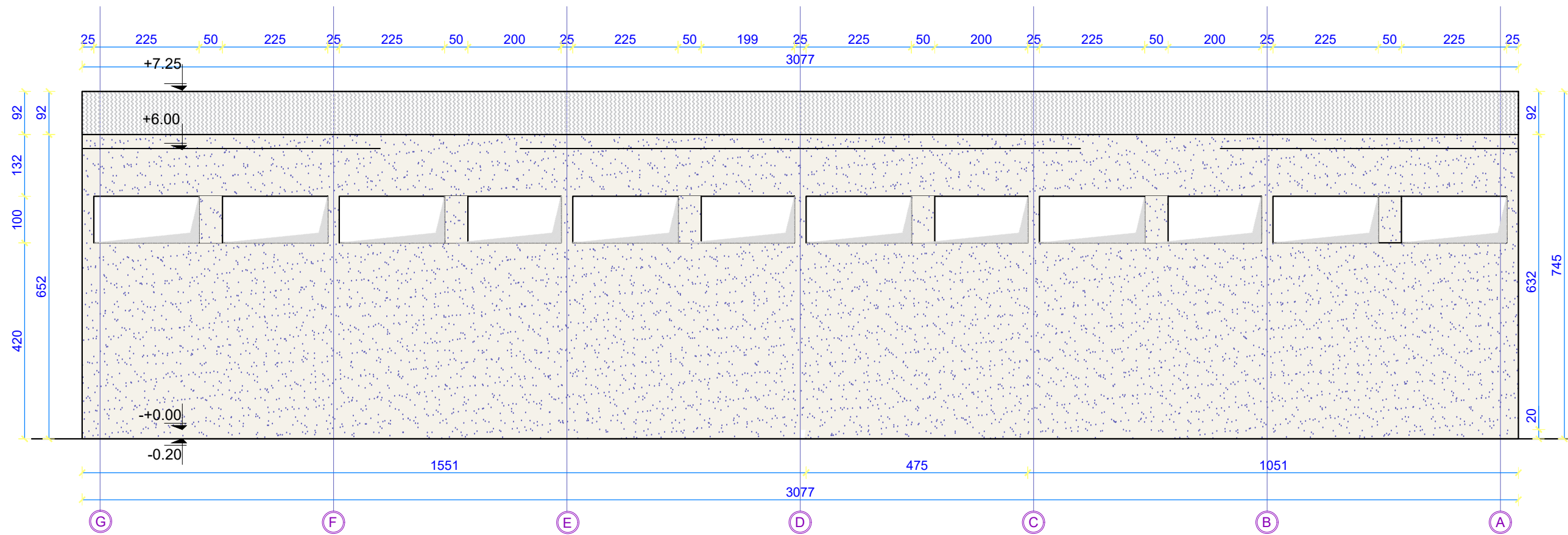
OBJEKTI: Objekti:Rikonstruksioni i shkolles "Mehmet Shehu" dhe ndertimi i palestres Adresa: Patos,Fier.			
EMERTIMI I FLETES: PLANIMETRIA SH.1:100			
FAZA E PROJEKTIMIT: PROJEKT ZBATIMI (Projekti Arkitektonik)		D.P.T.Zh. Pergjegjesi Arkitekt Inxh.Ndertimi Inxh.Elektrik Topograf	
SHKALLA	1/100	FLETA:	01
		Korrik 2020	

PAMJA JUGORE Sh 1:100



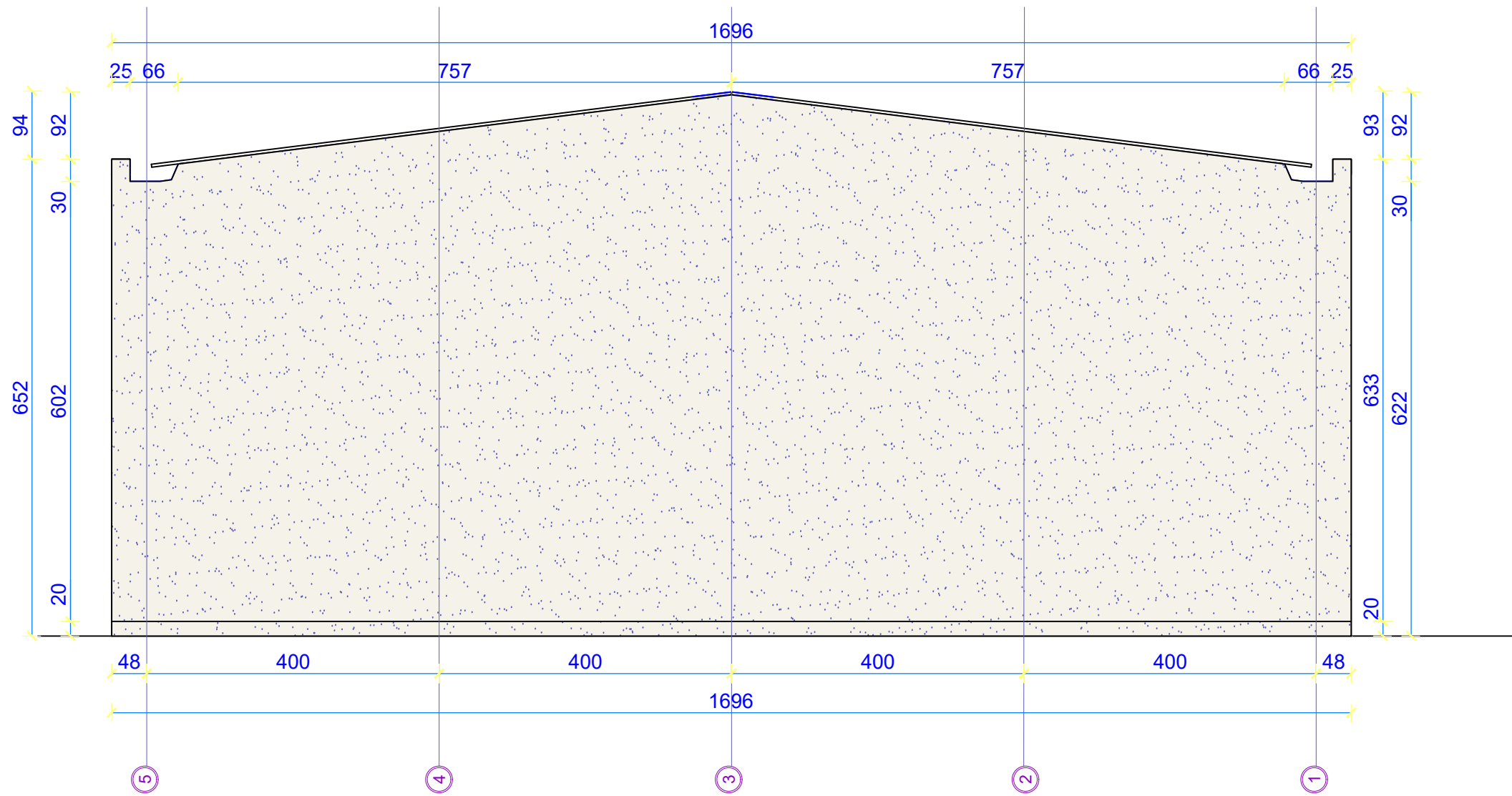
OBJEKTI:			
Objekti: Rikonstruksioni i shkolles "Mehmet Shehu" dhe ndertimi i palestres			
Adresa: Patos, Fier.			
EMERTIMI I FLETES:			
PAMJA JUGORE SH. 1:100			
FAZA E PROJEKTIMIT:		D.P.T.Zh:	
PROJEKT ZBATIMI (Projekti Arkitektonik)		Pergjegjesi	
		Arkitekt	
		Inzh.Ndertimi	
		Inzh.Elektrik	
		Topograf	
SHKALLA	1/100	FLETA:	02
		Korrik 2020	

PAMJA VERIORE Sh 1:100



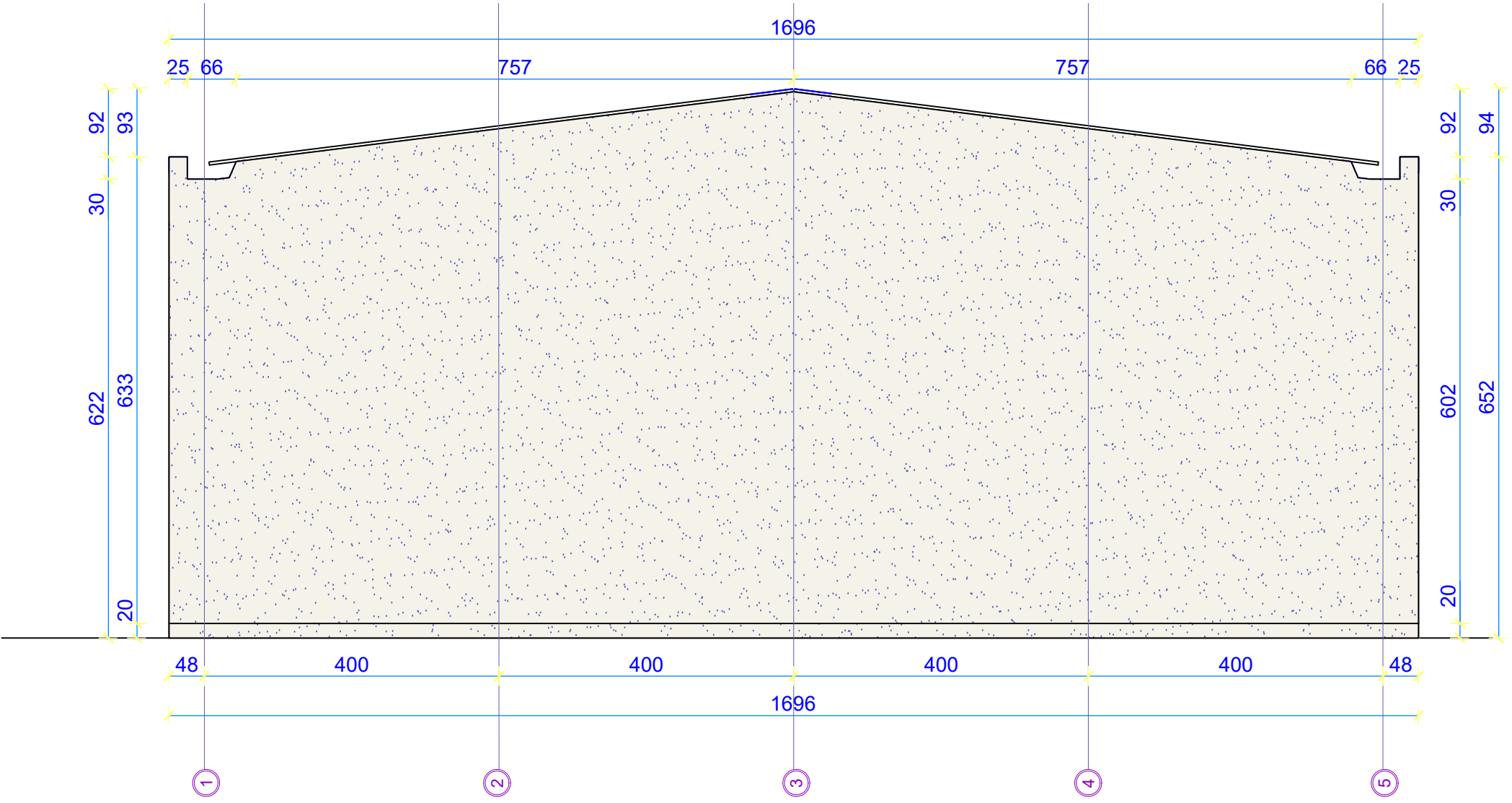
OBJEKTI: Objekti: Rikonstruksioni i shkolles "Mehmet Shehu" dhe ndertimi i palestres Adresa: Patos, Fier.			
EMERTIMI I FLETES: PAMJA VERIORE SH. 1:100			
FAZA E PROJEKTIMIT: PROJEKT ZBATIMI (Projekti Arkitektonik)	D.P.T.Zh.		
	Pergjegjesi		
	Arkititekt		
	Inzh.Ndertimi		
	Inzh.Elektrik		
Topograf			
SHKALLA	1/100	FLETA:	03
			Korrik 2020

PAMJA NGA PERENDIMI Sh 1:75



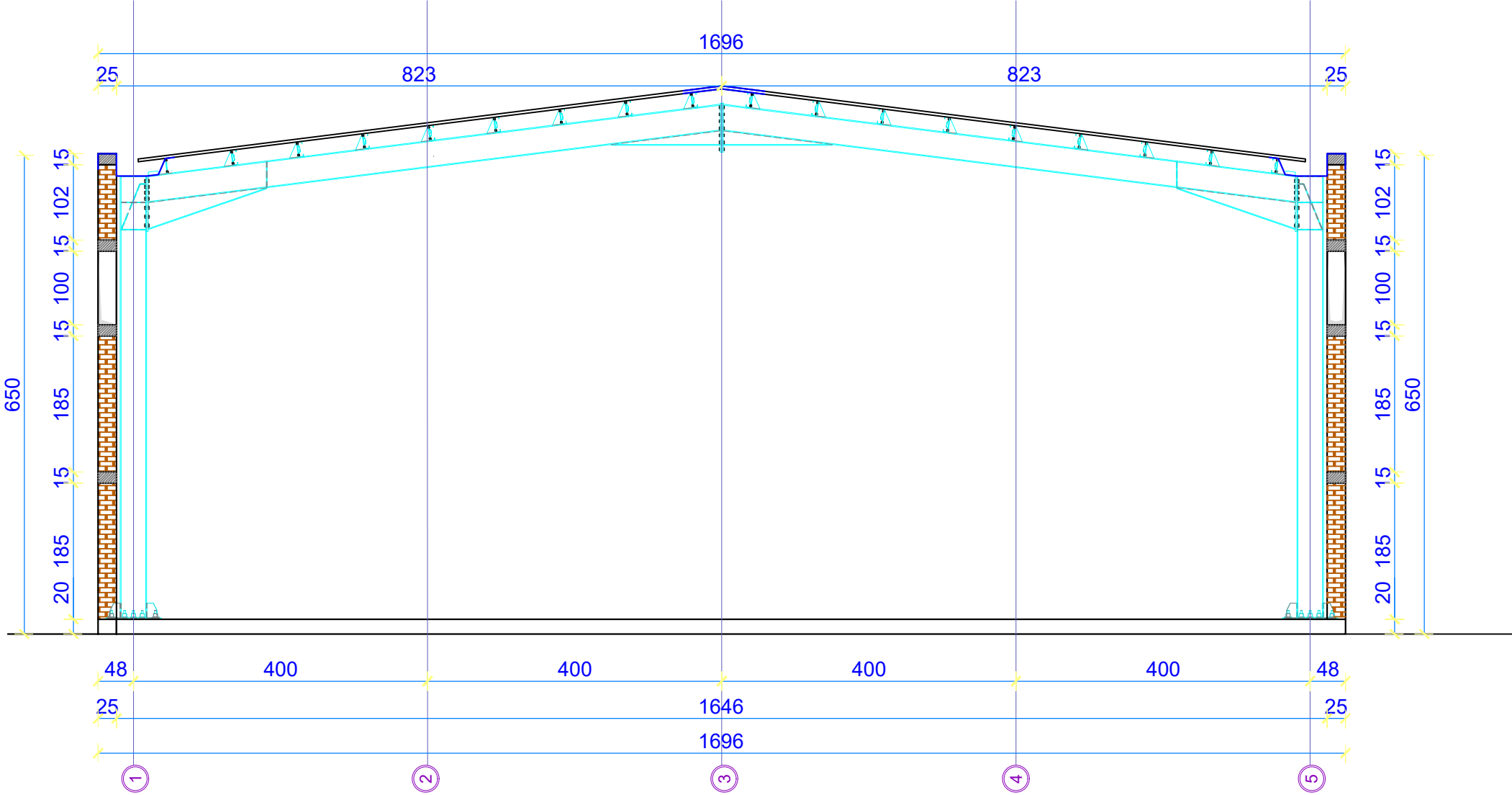
OBJEKTI: Objekti:Rikonstruksioni i shkolles "Mehmet Shehu" dhe ndertimi i palestres Adresa: Patos,Fier.			
EMERTIMI I FLETES: PAMJA NGA PERENDIMI SH.1:100			
FAZA E PROJEKTIMIT: PROJEKT ZBATIMI (Projekti Arkitektonik)	D.P.T.Zh:		
	Pergjegjesi		
	Arkitekt		
	Inxh.Ndertimi		
	Inxh.Elektrik		
	Topograf		
SHKALLA	1/75	FLETA:	04
			Korrik 2020

PAMJA NGA LINDJA Sh 1:75



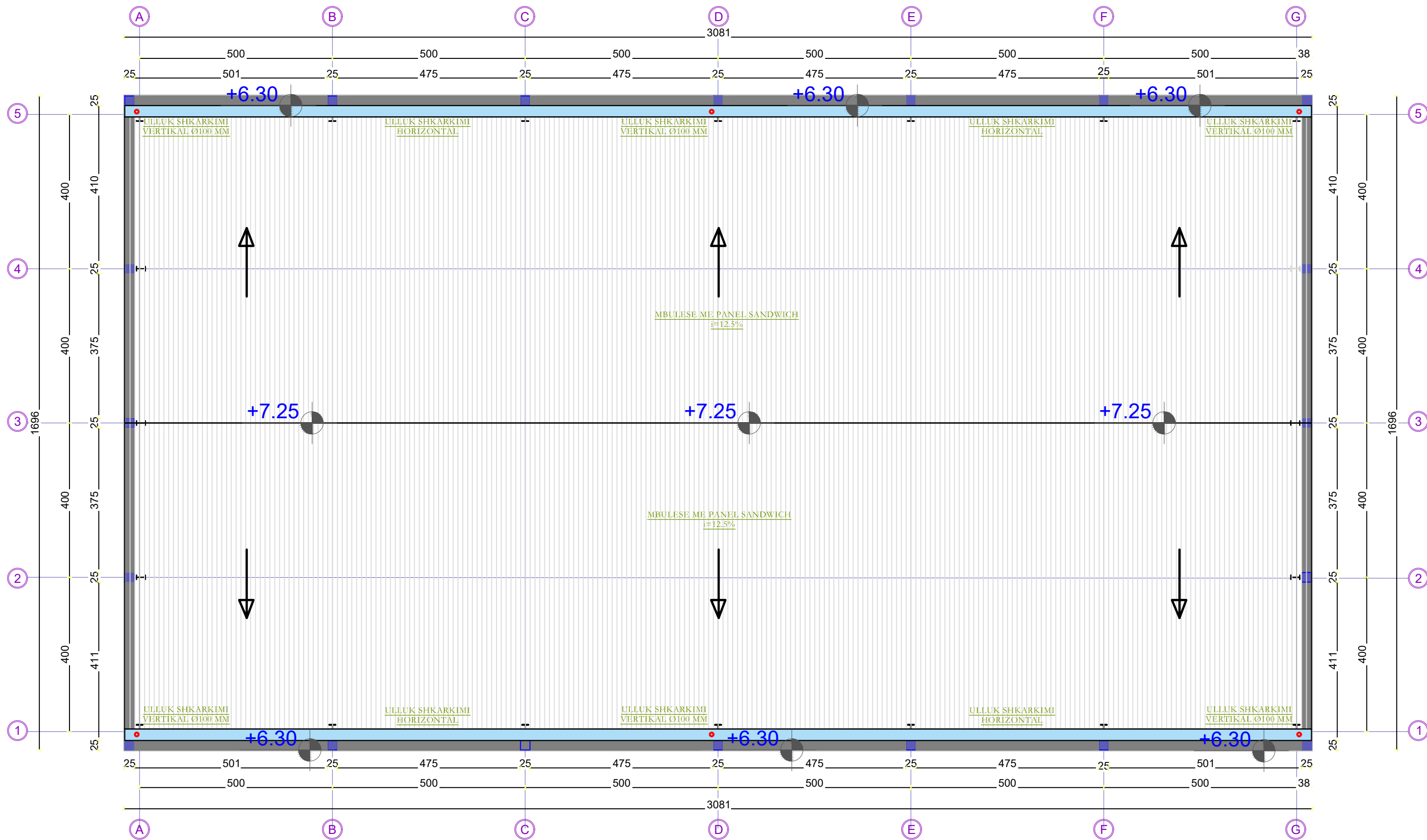
OBJEKTI: Objekti:Rikonstruksioni i shkolles "Mehmet Shehu" dhe ndertimi i palestres Adresa: Patos,Fier.			
EMERTIMI I FLETES: PAMJA NGA LINDJA SH.1:100			
FAZA E PROJEKTIMIT: PROJEKT ZBATIMI (Projekti Arkitektonik)	D.P.T.Zh:		
	Pergjegjesi		
	Arkitekt		
	Inzh.Ndertimi		
	Inzh.Elektrik		
	Topograf		
SHKALLA	1/75	FLETA:	05
			Korrik 2020

PRERJA TIP Sh 1:75



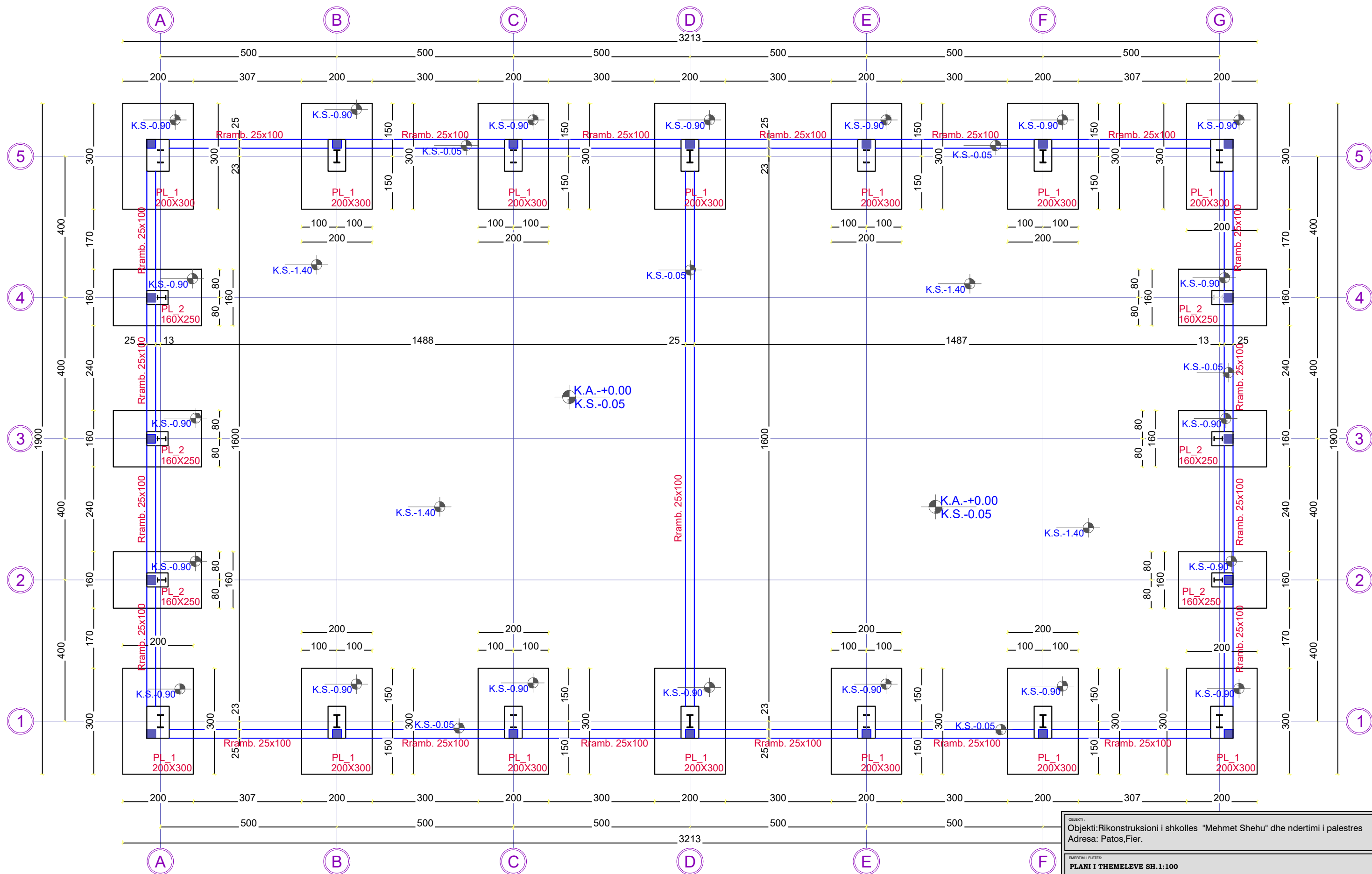
OBJEKTI:			
Objekti: Rikonstruksioni i shkolles "Mehmet Shehu" dhe ndertimi i palestres			
Adresa: Patos, Fier.			
EMERTIMI I FLETES:			
PRERJA TIP SH.1:100			
FAZA E PROJEKTIMIT:		D.P.T.Zh:	
PROJEKT ZBATIMI (Projekti Arkitektonik)		Pergjegjesi	
		Arkitekt	
		Inzh.Ndertimi	
		Inzh.Elektrik	
		Topograf	
SHKALLA	1/75	FLETA:	06
			Korrik 2020

PLANI I MBULESES Sh 1:100



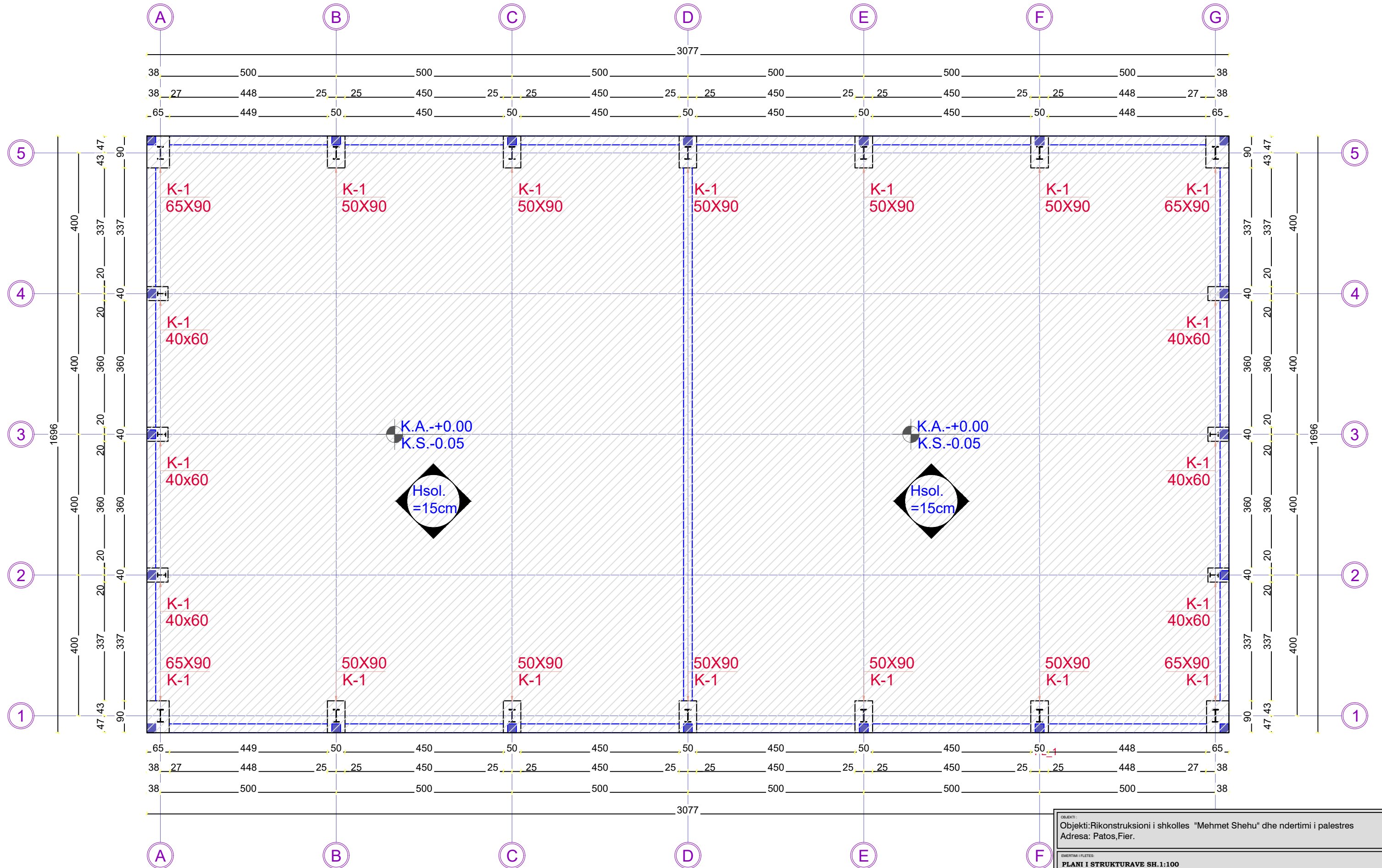
OBJEKTI: Objekti:Rikonstruksioni i shkolles "Mehmet Shehu" dhe ndertimi i palestres Adresa: Patos,Fier.			
EMERTIMI I FLETES: PLANI I MBULESES SH.1:100			
FAZA E PROJEKTIMIT: PROJEKT ZBATIMI (Projekti Arkitektonik)		D.P.T.Zh. Pergjegjesi Arkititekt Inzh.Ndertimi Inzh.Elektrik Topograf	
SHKALLA	1/100	FLETA:	07
		Korrik 2020	

PLANI I THEMELEVE Sh 1:100



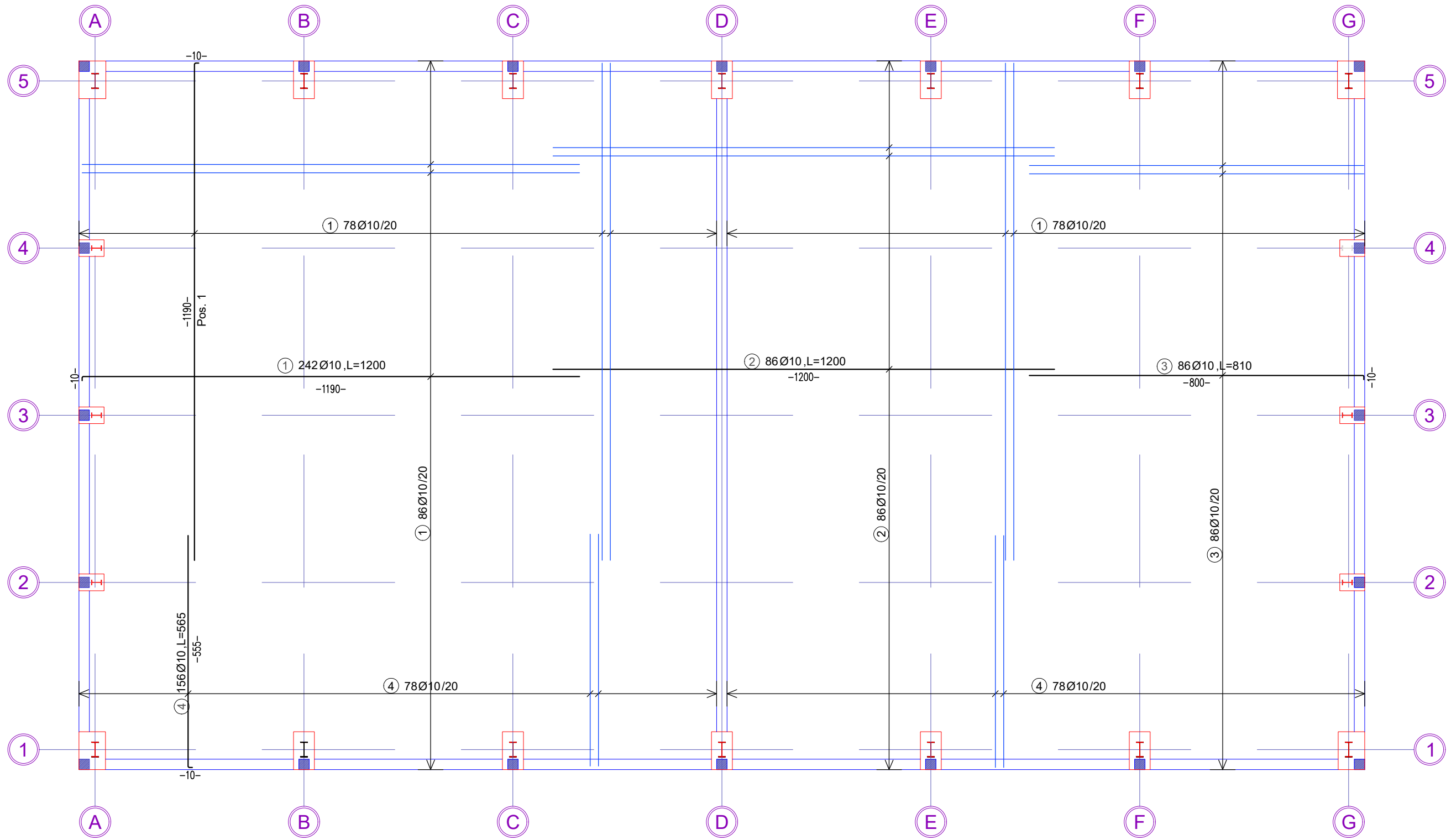
OBJEKTI: Objekti:Rikonstruksioni i shkolles "Mehmet Shehu" dhe ndertimi i palestres Adresa: Patos,Fier.			
EMERTIMI I FLETES: PLANI I THEMELEVE SH.1:100			
FAZA E PROJEKTIMIT: PROJEKT ZBATIMI (Projekti Arkitektonik)		D.P.T.Zh. Pergjegjesi Arkitekt Inzh.Ndertimi Inzh.Elektrik Topograf	
SHKALLA	1/100	FLETA:	08
		Korrik 2020	

PLANI I STRUKTURAVE -+0.00 Sh 1:100



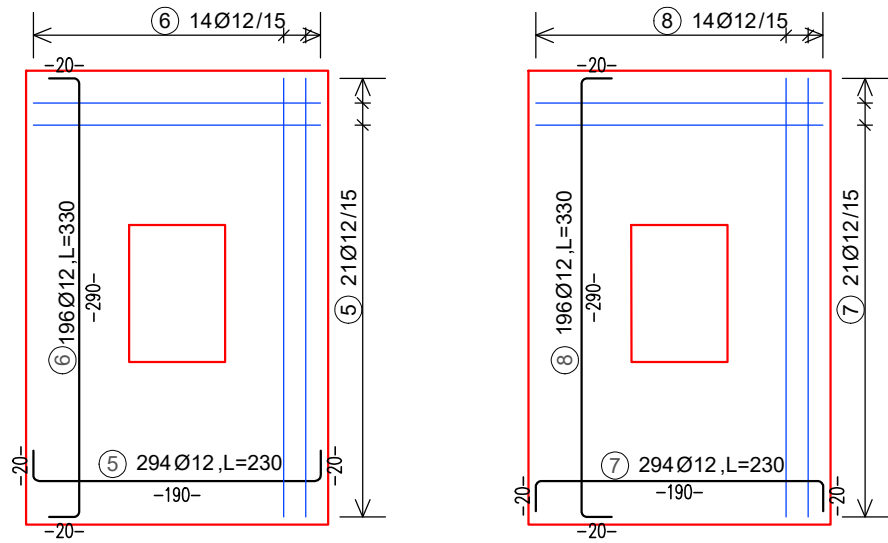
OBJEKTI: Objekti: Rikonstruksioni i shkolles "Mehmet Shehu" dhe ndertimi i palestres Adresa: Patos, Fier.			
EMERTIMI I FLETES: PLANI I STRUKTURAVE SH. 1:100			
FAZA E PROJEKTIMIT: PROJEKT ZBATIMI (Projekti Arkitektonik)		D.P.T.Zh: Pergjegjesi Arkititekt Inzh. Ndertimi Inzh. Elektrik Topograf	
SHKALLA	1/100	FLETA:	09
Korrik 2020			

ARMIMI I SOLETES -+0.00

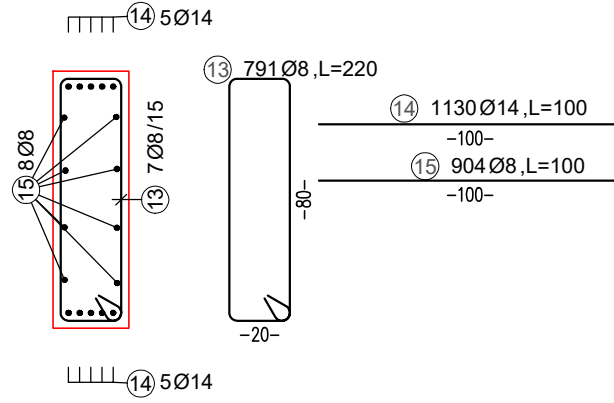


OBJEKTI: Objekti:Rikonstruksioni i shkolles "Mehmet Shehu" dhe ndertimi i palestres Adresa: Patos,Fier.			
EMERTIMI I FLETES: PLANI I STRUKTURAVE SH.1:100			
FAZA E PROJEKTIMIT: PROJEKT ZBATIMI (Projekti Arkitektonik)		D.P.T.Zh.	
		Pergjegjesi	
		Arkitekt	
		Inxh.Ndertimi	
		Inxh.Elektrik	
		Topograf	
SHKALLA	1/100	FLETA:	10
			Korrik 2020

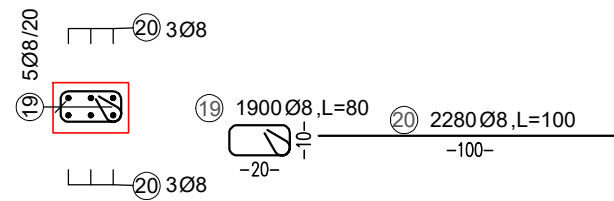
ARMIMI I PLINTIT PL1-200X300
Zg.e poshtme & Zg. e sipërme-14 cope



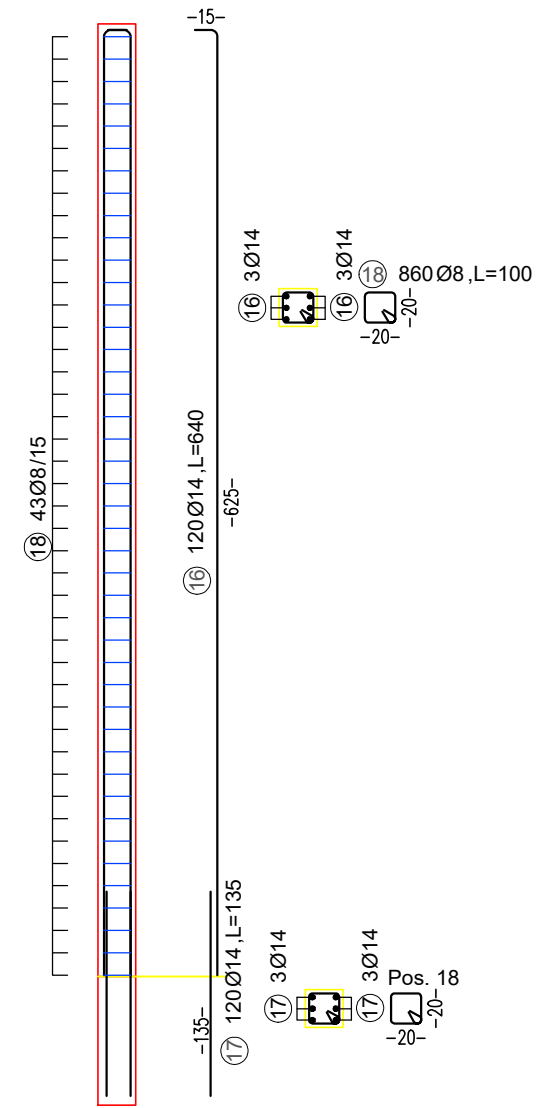
ARMIMI I RRAMBALLKES
25X85 113ML



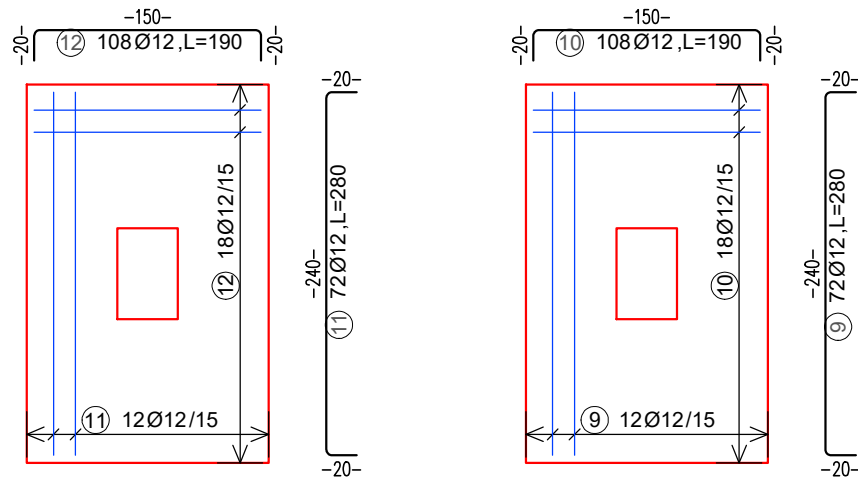
ARMIMI I BREZIT 25X15 380ML



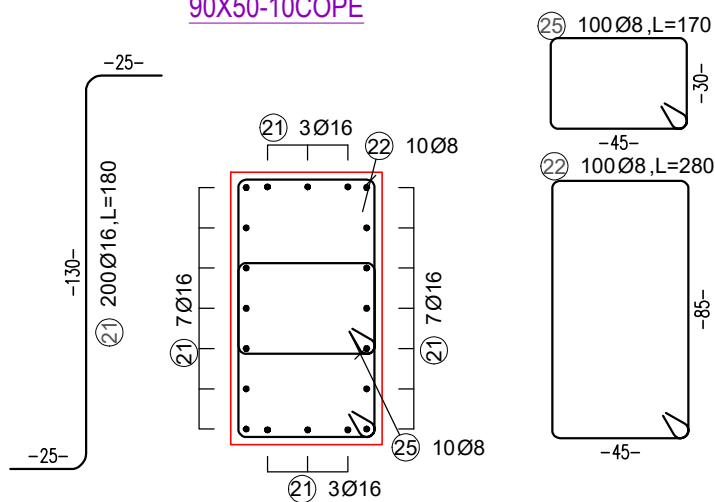
ARMIMI I KOLONCINAVE 25X25-20 COPE



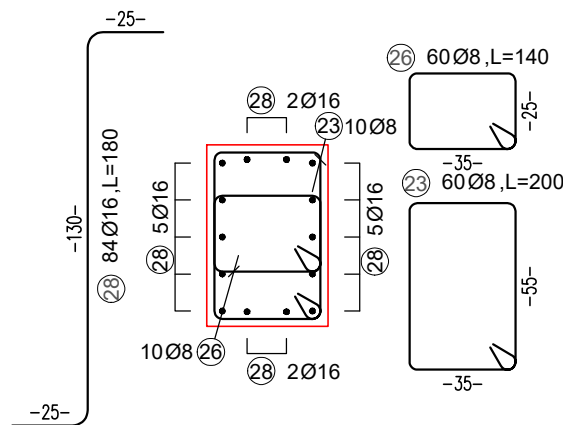
ARMIMI I PLINTIT PL1-160x250
Zg.e poshtme & Zg. e sipërme-6cope



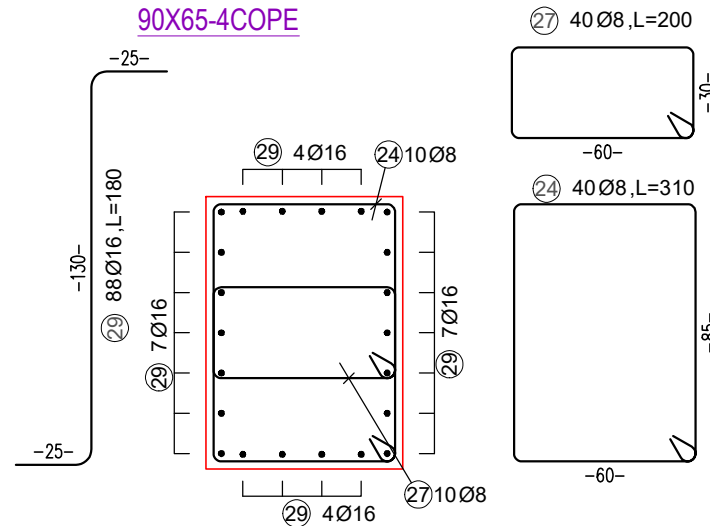
ARMIMI I QAFES SE PLINTIT
90X50-10COPE



ARMIMI I QAFES SE PLINTIT
60X40-6COPE



ARMIMI I QAFES SE PLINTIT
90X65-4COPE



OBJEKTI: Objekti: Rikonstruksioni i shkolles "Mehmet Shehu" dhe ndertimi i palestres Adresa: Patos, Fier.			
EMERTIMI I FLETES: PLANI I STRUKTURAVE SH.1:100			
FAZA E PROJEKTIMIT:	D.P.T.Zh.		
PROJEKT ZBATIMI (Projekti Arkitektonik)	Pergjegjesi		
	Arkitekt		
	Inxh.Ndertimi		
	Inxh.Elektrik Topograf		
SHKALLA	1/100	FLETA:	11
			Korrik 2020

BENDING SCHEDULE Steelgrade: B500B

Mark	Ø	Length	No.	Total length	Bending dimensions								
					a	b	c	d	e	R	h		
1	10	12.00	242	2904.00	0.10	11.90							
2	10	12.00	86	1032.00	12.00								
3	10	8.10	86	696.60	8.00	0.10							
4	10	5.65	156	881.40	5.55	0.10							
5	12	2.30	294	676.20	0.20	1.90	0.20						
6	12	3.30	196	646.80	0.20	2.90	0.20						
7	12	2.30	294	676.20	0.20	1.90	0.20						
8	12	3.30	196	646.80	0.20	2.90	0.20						
9	12	2.80	72	201.60	0.20	2.40	0.20						
10	12	1.90	108	205.20	0.20	1.50	0.20						
11	12	2.80	72	201.60	0.20	2.40	0.20						

BAR SCHEDULE Steelgrade: B500B	Pos.	No.	D	Length	D8	D10	D12	D14	D16
1	242	10	12.00			2904.00			
2	86	10	12.00			1032.00			
3	86	10	8.10			696.60			
4	156	10	5.65			881.40			
5	294	12	2.30				676.20		
6	196	12	3.30				646.80		
7	294	12	2.30				676.20		
8	196	12	3.30				646.80		
9	72	12	2.80				201.60		
10	108	12	1.90				205.20		
11	72	12	2.80				201.60		
12	108	12	1.90				205.20		
13	791	8	2.20	1740.20					
14	1130	14	1.00					1130.00	
15	904	8	1.00	904.00					
16	120	14	6.40					768.00	
17	120	14	1.35					162.00	
18	860	8	1.00	860.00					
19	1900	8	0.80	1520.00					
20	2280	8	1.00	2280.00					
21	200	16	1.80	360.00					
22	100	8	2.80	280.00					
23	60	8	2.00	120.00					
24	40	8	3.10	124.00					
25	100	8	1.70	170.00					
26	60	8	1.40	84.00					
27	40	8	2.00	80.00					
28	84	16	1.80	151.20					
29	88	16	1.80	158.40					

Total lengths	8162.20	5514.00	3459.60	2060.00	669.60
kg / m	D8 0.395	D10 0.617	D12 0.888	D14 1.210	D16 1.580
kg / d	3224.069	3402.138	3072.125	2492.600	1057.968
Total weight (kg)	13248.900				

BENDING SCHEDULE Steelgrade: B500B

Mark	Ø	Length	No.	Total length	Bending dimensions								
					a	b	c	d	e	R	h		
12	12	1.90	108	205.20	0.20	1.50	0.20						
13	8	2.20	791	1740.20	0.20	0.80	0.20	0.80			0.10	0.10	
14	14	1.00	1130	1130.00	1.00								
15	8	1.00	904	904.00	1.00								
16	14	6.40	120	768.00	6.25	0.15							
17	14	1.35	120	162.00	1.35								
18	8	1.00	860	860.00	0.20	0.20	0.20	0.20			0.10	0.10	
19	8	0.80	1900	1520.00	0.20	0.10	0.20	0.10			0.10	0.10	
20	8	1.00	2280	2280.00	1.00								
21	16	1.80	200	360.00									

Nr.	dx	dy	l	>
1	0.00	-0.25	0.25	90
2	1.30	0.00	1.30	-90
3	0.00	-0.25	0.25	

BENDING SCHEDULE Steelgrade: B500B

Mark	Ø	Length	No.	Total length	Bending dimensions								
					a	b	c	d	e	R	h		
22	8	2.80	100	280.00	0.85	0.45	0.85	0.45			0.10	0.10	
23	8	2.00	60	120.00	0.35	0.55	0.35	0.55			0.10	0.10	
24	8	3.10	40	124.00	0.60	0.85	0.60	0.85			0.10	0.10	
25	8	1.70	100	170.00	0.30	0.45	0.30	0.45			0.10	0.10	
26	8	1.40	60	84.00	0.35	0.25	0.35	0.25			0.10	0.10	
27	8	2.00	40	80.00	0.60	0.30	0.60	0.30			0.10	0.10	
28	16	1.80	84	151.20									

Nr.	dx	dy	l	>
1	0.00	-0.25	0.25	90
2	1.30	0.00	1.30	-90
3	0.00	-0.25	0.25	

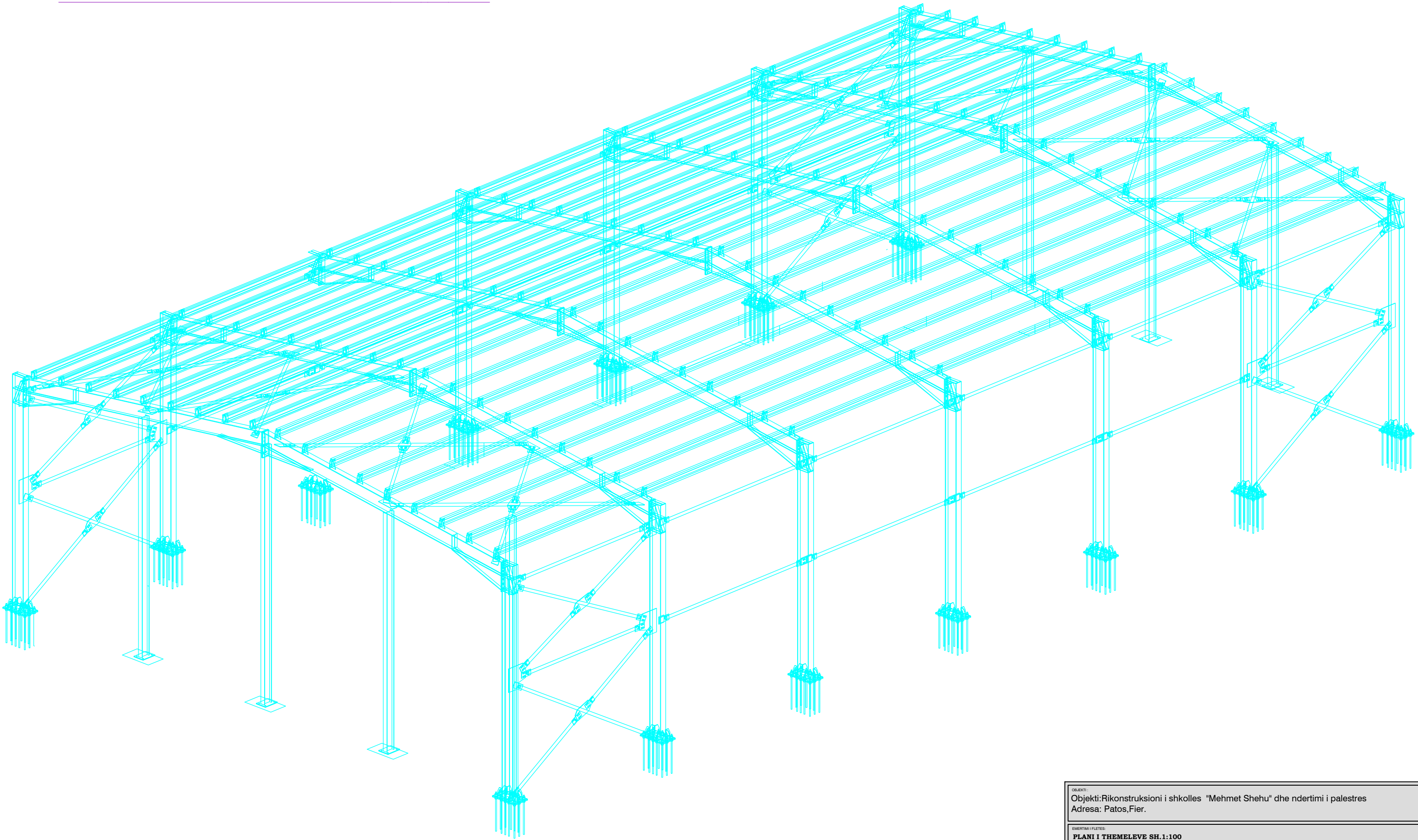
BENDING SCHEDULE Steelgrade: B500B

Mark	Ø	Length	No.	Total length	Bending dimensions								
					a	b	c	d	e	R	h		
29	16	1.80	88	158.40									

Nr.	dx	dy	l	>
1	0.00	-0.25	0.25	90
2	1.30	0.00	1.30	-90
3	0.00	-0.25	0.25	

OBJEKTI: Objekti:Rikonstruksioni i shkollës "Mehmet Shehu" dhe ndertimi i palestres Adresa: Patos,Fier.			
EMERTIMI I FLETES: PLANI I STRUKTURAVE SH.1:100			
FAZA E PROJEKTIMIT:	D.P.T.Zh.		
PROJEKT ZBATIMI (Projekti Arkitektonik)	Pergjegjesi		
	Arkitekt		
	Inzh.Ndertimi		
	Inzh.Elektrik Topograf		
SHKALLA	1/100	FLETA:	
			12
			Korrik 2020

PAMJA 3D E STRUKTURES Sh 1:100



OBJEKTI: Objekti:Rikonstruksioni i shkolles "Mehmet Shehu" dhe ndertimi i palestres Adresa: Patos,Fier.			
EMERTIMI I FLETES: PLANI I THEMELEVE SH.1:100			
FAZA E PROJEKTIMIT: PROJEKT ZBATIMI (Projekti Struktural)	D.P.T.Zh.		
	Pergjegjesi		
	Arkititekt		
	Inzh.Ndertimi		
	Inzh.Elektrik		
	Topograf		
SHKALLA	1/100	FLETA:	03
			Korrik 2020

Profile	Grade	Qty	Length(mm)	Net Area(m ²) for one	Net Area(m ²) for all	Net Wieght(kg) for one	Net Wieght(kg) for all
CFCHS76.1X2.9	S235JR	4	1811.41	0.43	1.73	9.15	36.60
CFCHS76.1X2.9	S235JR	4	2008.31	0.48	1.92	10.15	40.62
CFCHS76.1X2.9	S235JR	4	2184.95	0.52	2.09	11.05	44.22
CFCHS76.1X2.9	S235JR	4	2392.3	0.57	2.29	12.02	48.09
CFCHS76.1X2.9	S235JR	1	2445.95	0.58	0.58	12.36	12.36
CFCHS76.1X2.9	S235JR	2	2447.51	0.58	1.17	12.37	24.74
CFCHS76.1X2.9	S235JR	1	2447.71	0.59	0.59	12.37	12.37
CFCHS76.1X2.9	S235JR	1	2457.2	0.59	0.59	12.42	12.42
CFCHS76.1X2.9	S235JR	1	2457.66	0.59	0.59	12.45	12.45
CFCHS76.1X2.9	S235JR	3	2457.76	0.59	1.76	12.42	37.27
CFCHS76.1X2.9	S235JR	2	2457.86	0.59	1.17	12.45	24.90
CFCHS76.1X2.9	S235JR	1	2458.11	0.59	0.59	12.45	12.45
CFCHS76.1X2.9	S235JR	2	2458.12	0.59	1.17	12.45	24.90
CFCHS76.1X2.9	S235JR	1	2458.41	0.59	0.59	12.45	12.45
CFCHS76.1X2.9	S235JR	1	2459.13	0.59	0.59	12.46	12.46
CFCHS76.1X2.9	S235JR	4	3726.48	0.89	3.56	18.92	75.68
CFCHS76.1X2.9	S235JR	4	4079.14	0.97	3.90	20.72	82.88
CFCHS76.1X2.9	S235JR	4	4497.01	1.07	4.30	22.62	90.50
CFCHS76.1X2.9	S235JR	16	4532	1.08	17.33	23.03	368.47
CFCHS76.1X2.9	S235JR	4	5203.02	1.24	4.97	26.17	104.67
CFCHS76.1X2.9	S235JR	3	5492.78	1.31	3.94	27.74	83.23
CFCHS76.1X2.9	S235JR	1	5493.14	1.31	1.31	27.74	27.74
CFCHS76.1X2.9	S235JR	3	5503.38	1.32	3.95	27.80	83.40
CFCHS76.1X2.9	S235JR	1	5503.75	1.32	1.32	27.80	27.80
Total		72	25939		61.99		1312.65
CW205-2-30*60-20	S235JR	105	5000	3.96	415.51	30.80	3233.70
CW205-2-30*60-20	S235JR	3	5085	4.02	12.07	31.32	93.96
Total		108	54025		427.59		3327.66
D27	S235JR	168	1000	0.08	14.27	4.29	721.05
Total		168	16800		14.27		721.05
IPE240	S235JR	2	6111.22	5.63	11.27	178.39	356.77
IPE240	S235JR	2	6126.22	5.65	11.30	178.82	357.65
IPE240	S235JR	2	6611.22	6.10	12.19	192.98	385.96
Total		6	37697		34.76		1100.39
IPE330	S235JR	14	1480	1.86	25.98	69.50	973.07
Total		14	20719		25.98		973.07
IPE360	S355J0	6	6000	8.12	48.71	329.46	1976.73
IPE360	S355J0	8	6002.5	8.12	64.97	329.59	2636.74
IPE360	S235JR	14	1829.45	2.48	34.65	93.64	1311.02
IPE360	S235JR	14	7885.55	10.67	149.37	430.52	6027.25
Total		42	22002		297.70		11951.74
PD54*13	S235JR	336	50	0.01	3.55	0.64	215.20
Total		336	16800		3.55		215.20
PL5*28	S235JR	16	76.1	0.01	0.08	0.08	1.34
Total		16	1217		0.08		1.34
PL5*31	S235JR	16	89.88	0.00	0.08	0.07	1.17
Total		16	1438		0.08		1.17
PL5*49	S235JR	16	95.91	0.01	0.14	0.14	2.29
Total		16	1534		0.14		2.29
PL10*22	S235JR	4	76.1	0.00	0.02	0.12	0.46
Total		4	304		0.02		0.46
PL10*23	S235JR	8	76.1	0.00	0.04	0.12	0.98
Total		8	608		0.04		0.98
PL10*32	S235JR	4	76.1	0.01	0.03	0.18	0.70
Total		4	304		0.03		0.70
PL10*33	S235JR	2	75.63	0.01	0.01	0.18	0.36
PL10*33	S235JR	6	75.64	0.01	0.04	0.18	1.08
PL10*33	S235JR	4	75.65	0.01	0.03	0.18	0.72
PL10*33	S235JR	20	75.71	0.01	0.13	0.18	3.61
PL10*33	S235JR	12	75.72	0.01	0.08	0.18	2.17
PL10*33	S235JR	8	75.78	0.01	0.05	0.18	1.45
PL10*33	S235JR	12	75.79	0.01	0.08	0.18	2.17
PL10*33	S235JR	16	76.09	0.01	0.11	0.18	2.92
PL10*33	S235JR	128	76.1	0.01	0.85	0.18	23.39
Total		208	15804		1.38		37.87
PL10*34	S235JR	4	76.1	0.01	0.03	0.19	0.76
Total		4	304		0.03		0.76
PL10*43	S235JR	8	76.1	0.01	0.07	0.24	1.94
Total		8	608		0.07		1.94
PL10*44	S235JR	4	76.1	0.01	0.03	0.25	1.00
Total		4	304		0.03		1.00
PL10*75	S235JR	28	80	0.01	0.41	0.46	12.75
Total		28	2240		0.41		12.75

PL10*80	S235JR	84	334.6	0.06	5.11	2.07	173.87
PL10*80	S235JR	28	335.95	0.06	1.71	2.08	58.19
PL10*80	S235JR	28	661.26	0.12	3.36	4.14	115.84
Total		140	56028		10.18		347.90
PL10*100	S235JR	168	100	0.02	4.03	0.78	131.88
PL10*100	S235JR	8	179.61	0.03	0.27	1.14	9.03
Total		176	18236		4.30		140.91
PL10*116	S235JR	7	315	0.08	0.57	2.87	20.08
Total		7	2205		0.57		20.08
PL10*120	S235JR	126	205.02	0.03	3.81	0.97	121.67
PL10*120	S235JR	1	315	0.08	0.08	2.97	2.97
Total		127	26147		3.89		124.64
PL10*130	S235JR	16	260	0.08	1.21	2.65	42.45
Total		16	4160		1.21		42.45
PL10*140	S235JR	120	310	0.10	11.50	3.41	408.83
Total		120	37200		11.50		408.83
PL10*170	S235JR	32	180	0.07	2.18	2.40	76.87
PL10*170	S235JR	126	205	0.08	9.73	2.74	344.70
Total		158	31590		11.91		421.57
PL10*249	S235JR	1	489.71	0.23	0.23	8.43	8.43
PL10*249	S235JR	3	489.77	0.23	0.68	8.43	25.28
PL10*249	S235JR	1	489.78	0.23	0.23	8.43	8.43
PL10*249	S235JR	3	489.87	0.23	0.68	8.43	25.29
Total		8	3918		1.82		67.42
PL10*262	S235JR	4	459.63	0.22	0.89	8.25	32.99
Total		4	1838		0.89		32.99
PL10*266	S235JR	4	529.44	0.26	1.06	9.84	39.35
Total		4	2117		1.06		39.35
PL10*270	S235JR	4	570.57	0.30	1.19	11.05	44.19
Total		4	2282		1.19		44.19
PL10*271	S235JR	4	459.63	0.23	0.92	8.56	34.23
Total		4	1838		0.92		34.23
PL10*283	S235JR	3	323.45	0.11	0.32	3.79	11.36
PL10*283	S235JR	1	323.52	0.11	0.11	3.79	3.79
PL10*283	S235JR	1	323.65	0.11	0.11	3.79	3.79
PL10*283	S235JR	3	323.72	0.11	0.32	3.79	11.38
Total		8	2588		0.85		30.32
PL10*284	S235JR	1	323.68	0.11	0.11	3.79	3.79
PL10*284	S235JR	3	323.75	0.11	0.32	3.79	11.38
PL10*284	S235JR	3	323.88	0.11	0.32	3.80	11.39
PL10*284	S235JR	1	323.94	0.11	0.11	3.80	3.80
Total		8	2590		0.85		30.36
PL10*390	S235JR	4	396.16	0.31	1.23	11.46	45.83
PL10*390	S235JR	4	396.7	0.31	1.23	11.47	45.89
Total		8	3171		2.46		91.72
PL10*567	S235JR	4	604.34	0.59	2.37	22.45	89.79
Total		4	2417		2.37		89.79
PL10*578	S235JR	4	604.4	0.60	2.41	22.81	91.26
Total		4	2417		2.41		91.26
PL15*140	S235JR	112	200	0.06	6.75	3.00	334.84
Total		112	22399		6.75		334.84
PL15*300	S235JR	6	400	0.26	1.57	14.13	84.78
Total		6	2400		1.57		84.78
PL20*200	S235JR	14	665	0.30	4.21	20.88	292.33
PL20*200	S235JR	14	755.13	0.34	4.76	23.71	331.96
Total		28	19881		8.97		624.29
PL20*450	S235JR	14	750	0.72	10.09	52.86	740.07
Total		14	10500		10.09		740.07

OBJEKTI: Objekti:Rikonstruksioni i shkollës "Mehmet Shehu" dhe ndertimi i palestres Adresa: Patos,Fier.			
EMERTIMI I PLETES: PLANI I STRUKTURAVE SH.1:100			
FAZA E PROJEKTIMIT: PROJEKT ZBATIMI (Projekti Arkitektonik)	D.P.T.Zh. Pergjegjesi Arkitekt Inxh.Ndertimi Inxh.Elektrik Topograf		
SHKALLA	1/100	FLETA:	14
			Korrik 2020